



National Plant Monitoring Scheme

Useful mapping tools, sites and Apps

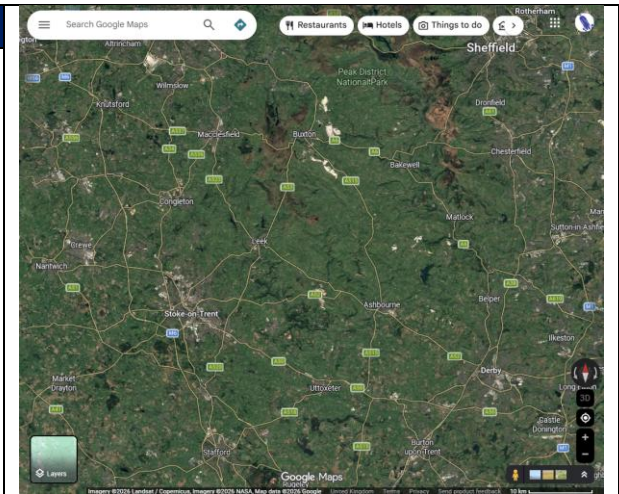
Below you can find a list of useful websites and tools that can support your exploring land ownership within your square, as well as navigating and locating/relocating survey plots.

Getting to know your square:

Google Maps

<https://www.google.com/maps>

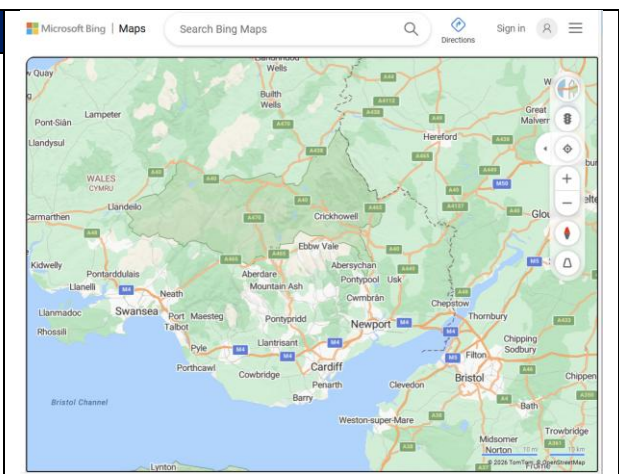
Useful for exploring your square virtually, viewing sites, assessing road access, finding local business and farms etc.



Bing Maps

<https://www.bing.com/maps>

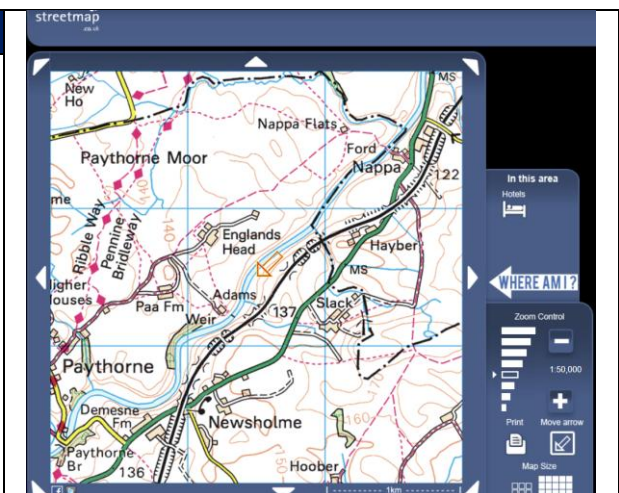
Useful for exploring your square virtually, viewing sites, assessing road access, finding local business and farms etc.



Streetmap

<https://www.streetmap.co.uk/map>

More detailed mapping Roadways, pathways etc with elevation contour lines.



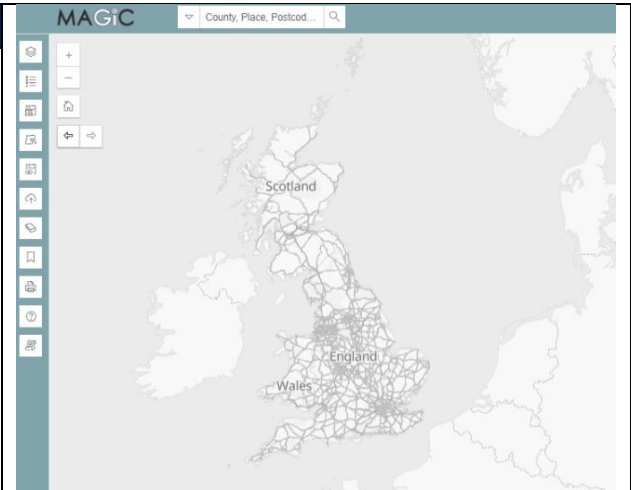


National Plant Monitoring Scheme

Defra MAGIC Map

<https://magic.defra.gov.uk/MagicMap.html>

An interactive mapping system that holds maps and data on the natural environment, such as habitats and species types. Also includes designated sites, landscape types, and environmental schemes.



And of course....

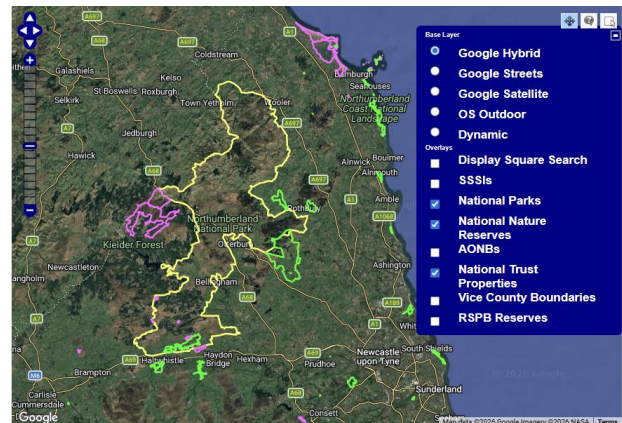
NPMS: Squares near me

<https://www.npms.org.uk/square-near-me-public>

Provides boundaries of:

- SSSIs
- National Parks
- National Nature Reserves
- AONBs
- National Trust properties
- RSPB reserves

A useful starting point when investigating who owns and manages the land that falls within.





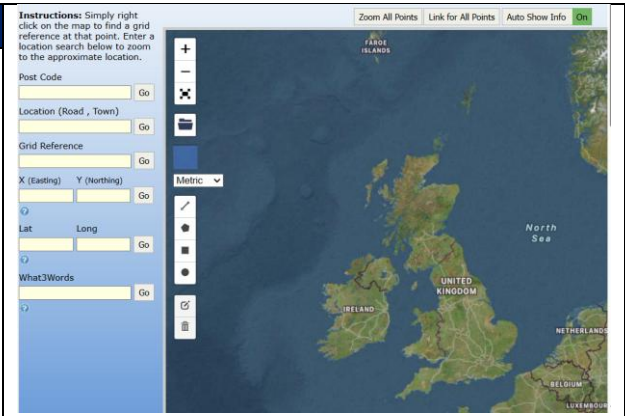
National Plant Monitoring Scheme

Navigating your square and locating/relocating survey plots:

UK Grid Reference Finder

[Grid Reference Finder](#)

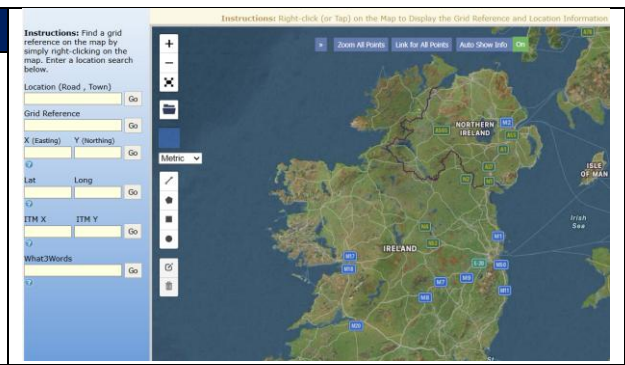
Useful for both exploring an area digitally, locating areas from records and also converting locations. For example, converting Grid references or Lat/Long coords to What3Words and vice versa.



Irish Grid Reference Finder

[Irish Grid Reference Finder](#)

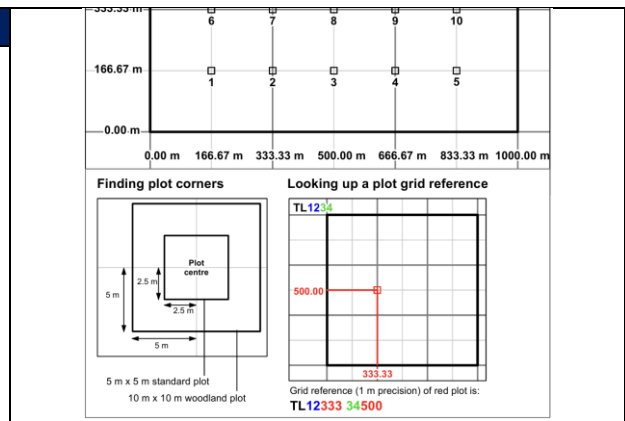
As above, for Ireland



NPMS Grid reference crib sheet

[NPMS_Plot_GridRef_Offsets.pdf](#)

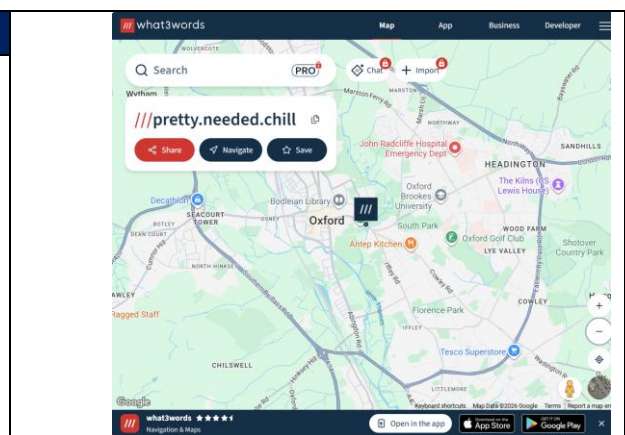
NPMS resource to understanding/reading coordinates, looking up grid references and how to find your plot corners.



What3Words

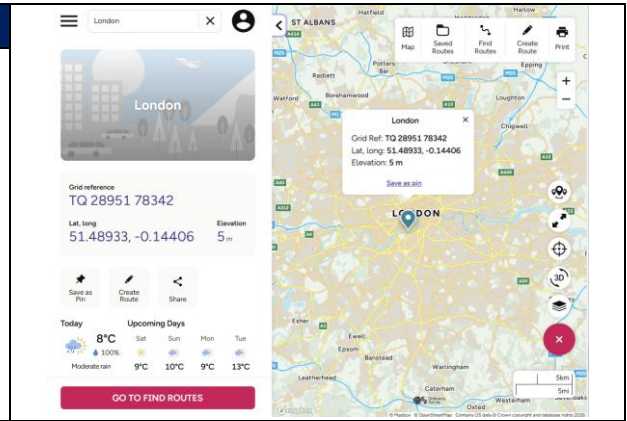
<https://what3words.com/>

A geocoding system that divides the entire world into 3mx3m squares, assigning each a unique, fixed three-word address. It is used for precise, easily communicated locations, offering higher accuracy than traditional street addresses.



Ordnance survey Map

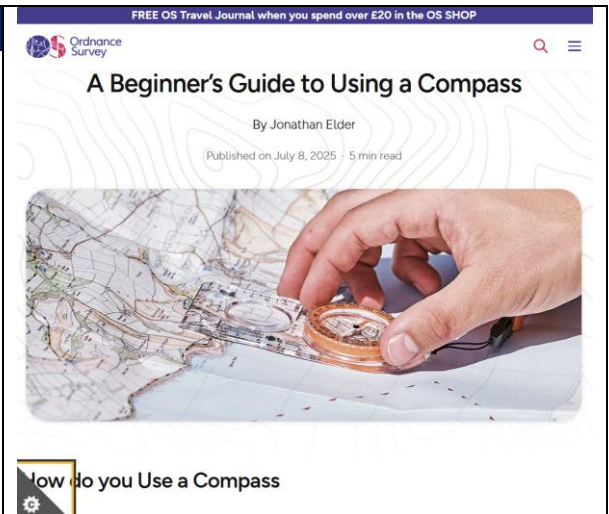
[Detailed maps & routes to explore across the UK](#)
[| OS Maps](#)



Using a compass

<https://getoutside.ordnancesurvey.co.uk/guides/a-beginners-guide-to-using-a-compass/>

Ordnance survey guidance and tips for those new to map reading and using a compass.



<https://www.naturalnavigator.com/find-your-way-using/sun/>

The natural Navigator guide and tips to support navigation with Nature. I.e. how to navigate using the sun. Also useful to know which way plots are facing and locating the south west corner.

